

BRING IT ON!

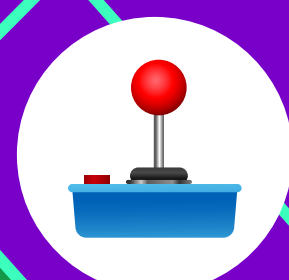
YOUTH FESTIVAL



MAIN STAGE



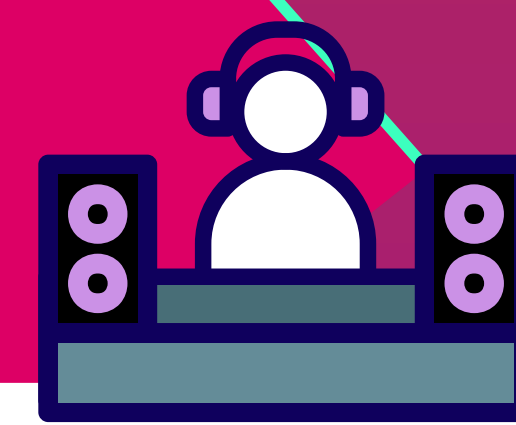
**MARKETS
AND YOUTH
EXPO**



**SPORTS
ZONE**



**STREET
ART
SPACE**



**RED BULL
DJ STAGE**

RIDES



**FOODIES
ZONE**

ENTRY

ENTRY VIA SMITHFIELD RD →



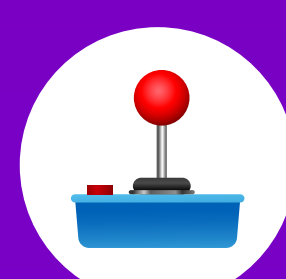
**TOILETS /
ACCESSIBLE TOILETS**



**BASKETBALL
COURT**



QUIETER SPACE



ARCADE ZONE

WATER STATIONS AVAILABLE THROUGHOUT THE FESTIVAL

